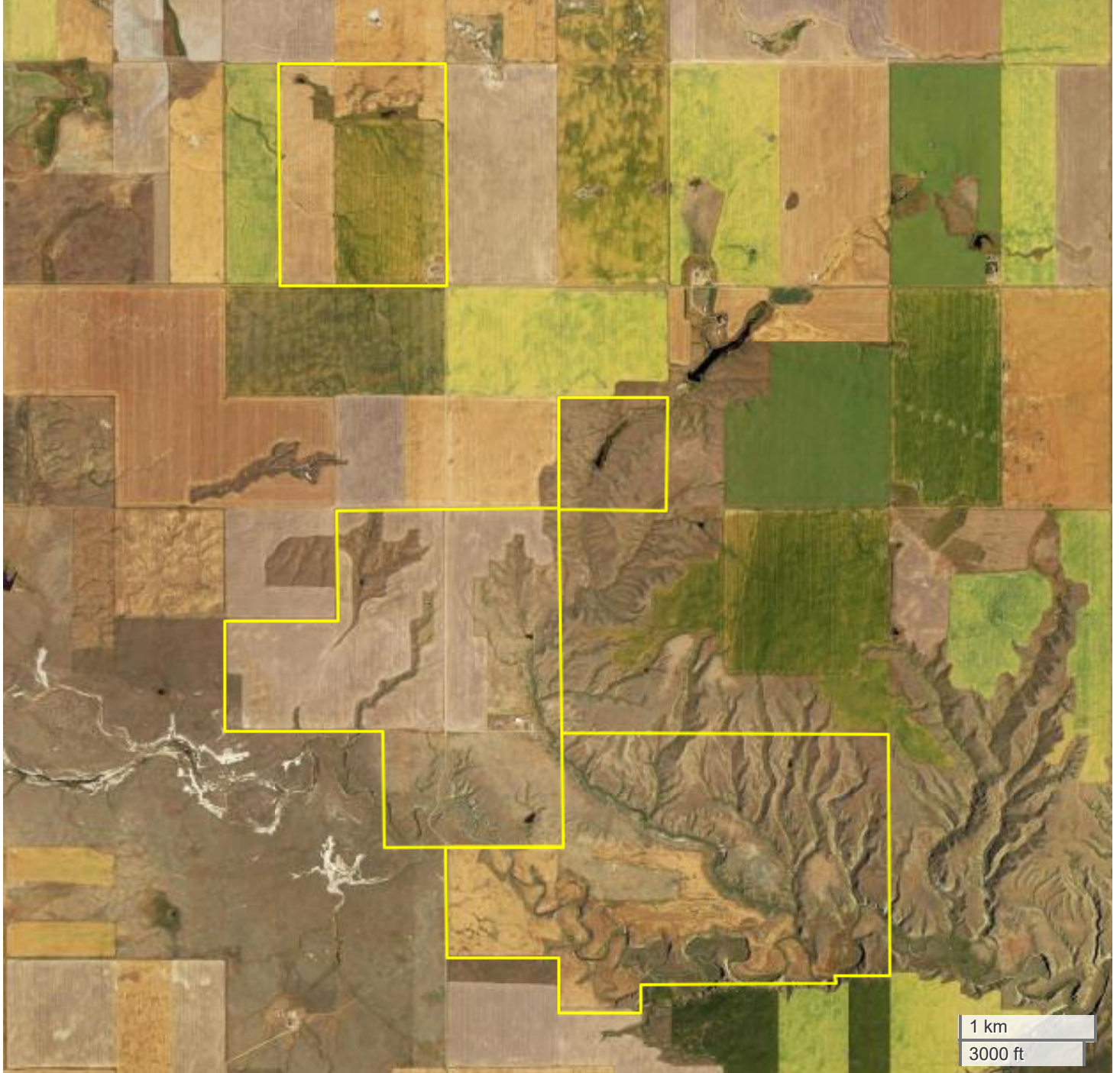




TRACTS 5-10  
**AERIAL MAP**



Center: 47.711769, -110.055625

**34-23N-13E**

**Fort Benton CCD**

**Chouteau County, MT**



FarmWorth, LLC makes no warranties, express or implied, regarding the accuracy of any information provided through FarmWorth.com. User is solely responsible for independently verifying all information prior to use and waives any claims against FarmWorth, LLC arising from inaccuracies in such information.

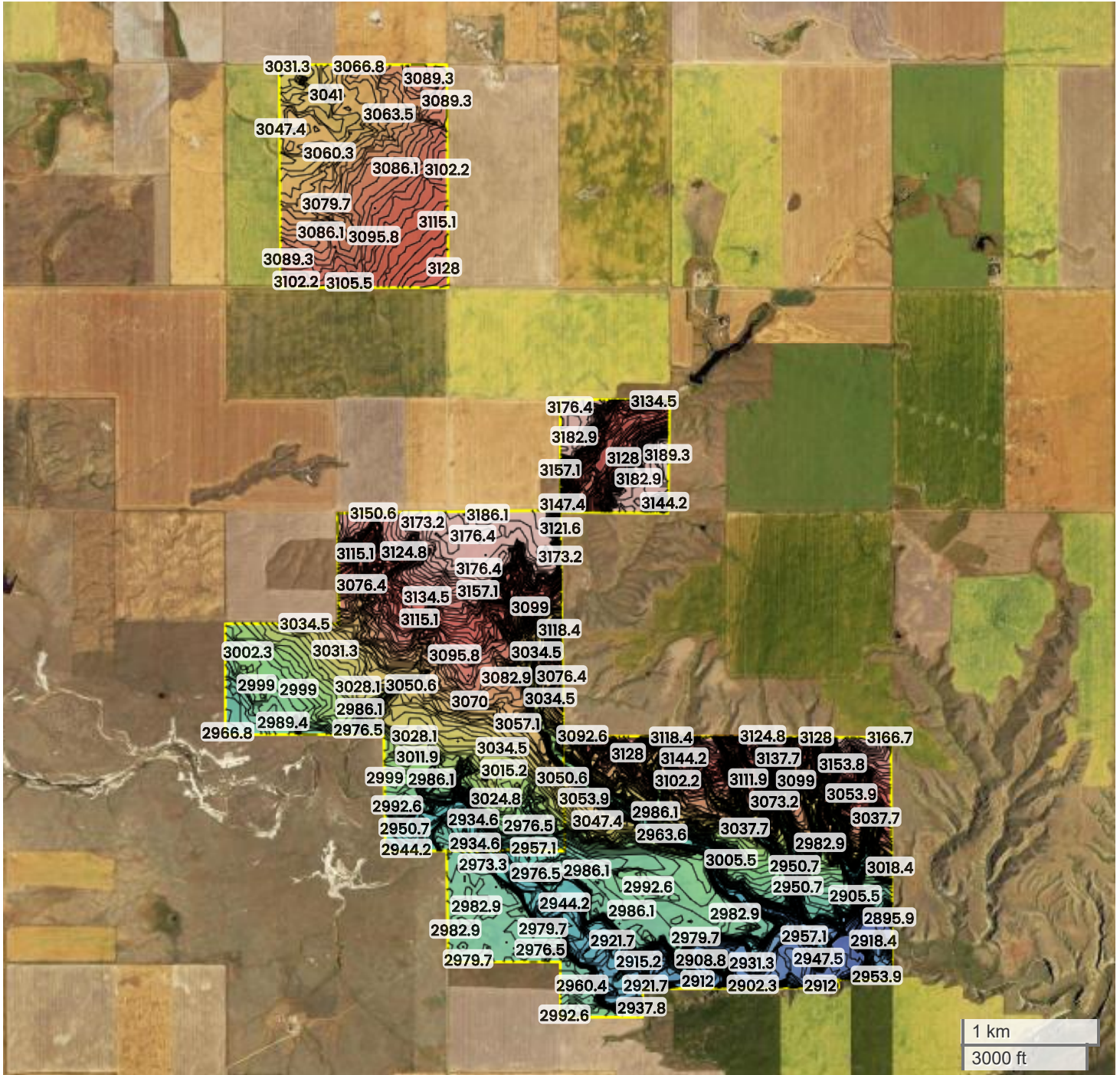


Code	Description	Acres	% of field	Overall NCCPI	Soil Class (Irr)	Soil Class (Non-Irr)	Drainage Class
303A	Flatcreek-Nobe silty clays, 0 to 2 percent slopes	8.81	0.30 %	13	-	6	Somewhat poorly drained
16B	Degradand loam, 0 to 4 percent slopes	8.22	0.28 %	19	2	3	Well drained
W	Water	3.91	0.13 %	0	-	-	-
674B	Bearpaw-Waltham complex, 0 to 4 percent slopes	1.51	0.05 %	29	3	3	Well drained
261B	Absher-Nobe complex, 0 to 4 percent slopes	1.44	0.05 %	2	7	7	Well drained
842A	Wyola-Daglum complex, 0 to 2 percent slopes	0.89	0.03 %	33	-	4	Moderately well drained
974F	Sunburst-Neldore complex, 15 to 60 percent slopes	0.51	0.02 %	3	-	6	Well drained
<b>Average:</b>				<b>20.3</b>			

Soils data provided by USDA and NRCS.



TRACTS 5-10  
TOPOGRAPHY



2880 ft

3193 ft



Center: 47.711742, -110.055620

34-23N-13E

Fort Benton CCD  
Chouteau County, MT

Source: USGS 10m DEM

Interval(ft): 3

Max: 3192.5 ft

Min: 2879.7 ft

Range: 312.8 ft

Average: 3036.1 ft

FarmWorth, LLC makes no warranties, express or implied, regarding the accuracy of any information provided through FarmWorth.com. User is solely responsible for independently verifying all information prior to use and waives any claims against FarmWorth, LLC arising from inaccuracies in such information.